

SUBJECT

The Wizard System wiring diagrams for use with Solenoid style locking devices on sliding doors

September 11, 2001

INSTRUCTIONS

When used with a solenoid-style locking device, we have found that the relay contacts used with the Wizard motion detectors are intermittently failing. A strong arcing from the coil of the solenoid when the signal is dropped is causing this problem.

The locking devices in question are the solenoid-type with microswitch contacts. The plunger of the solenoid pushes against the microswitch tongue when the solenoid receives power. The microswitch contacts then short activation and common of the control box. When wiring a Wizard system into sliding automatic doors with this device please use the following diagrams. Please note the differences in the solenoid locking device with and without a built-in rectifier.

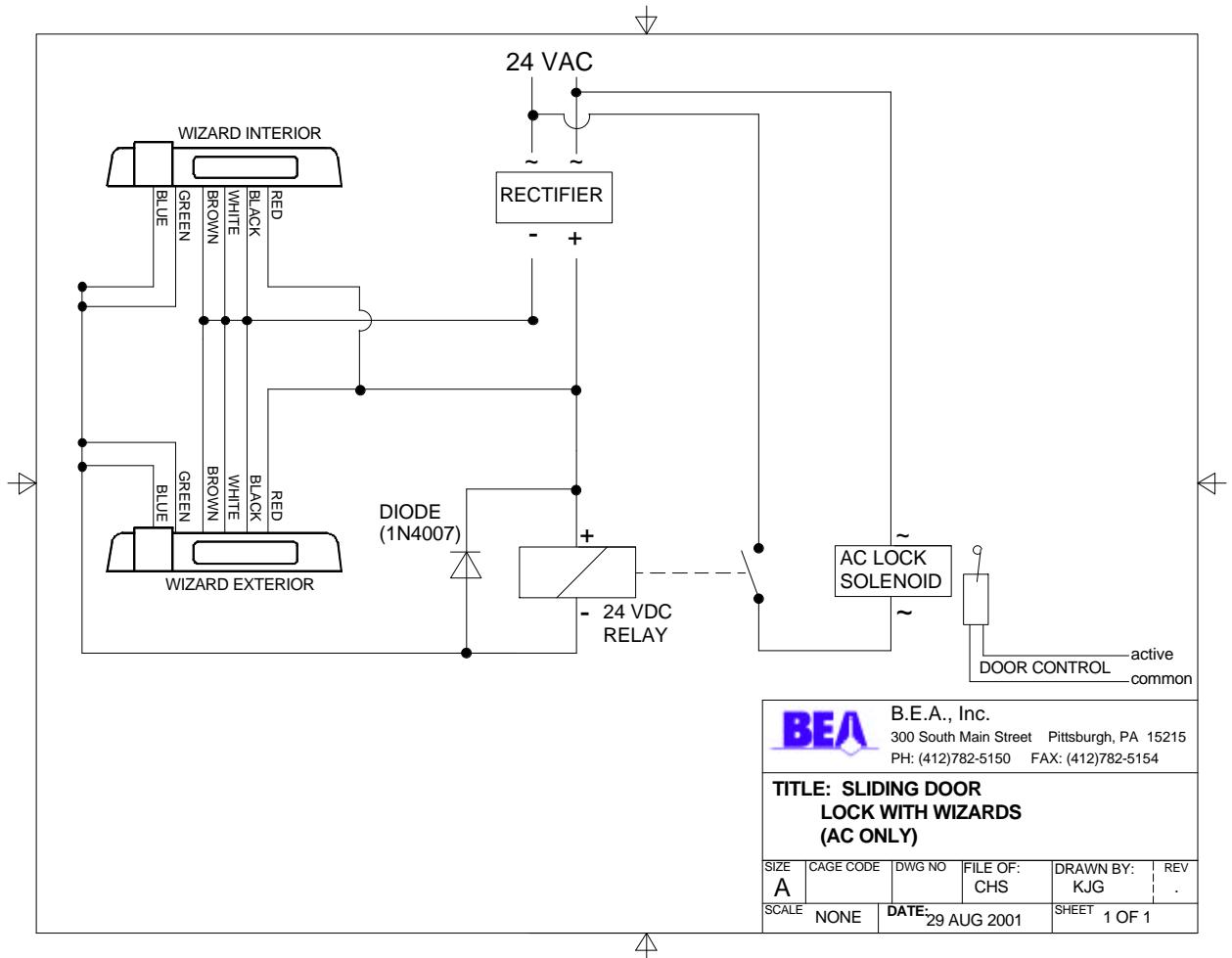


Figure 1: Sliding Door Lock With Wizards (AC ONLY)

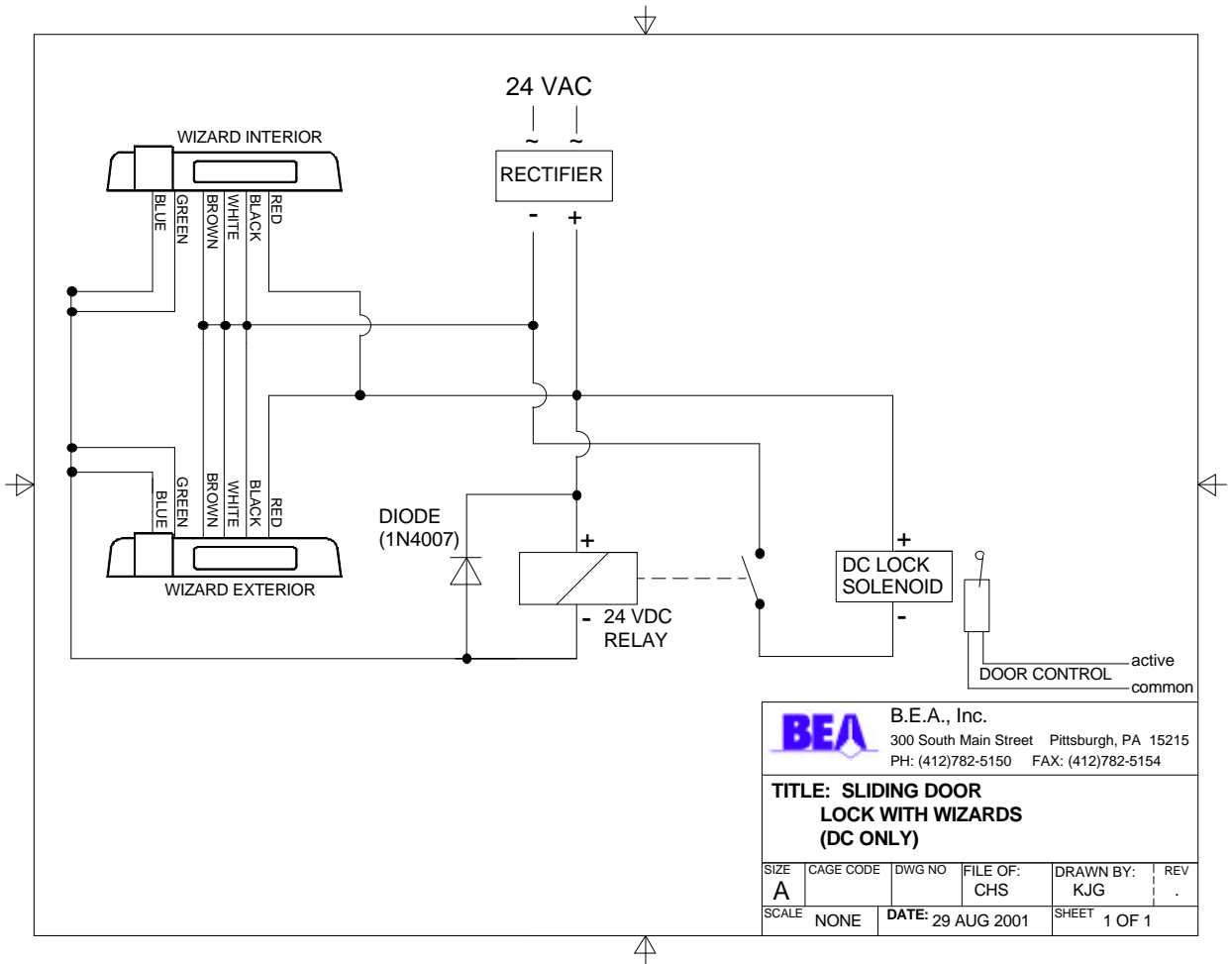


Figure 2: Sliding Door Lock With Wizards (DC ONLY)

If after troubleshooting a problem, a satisfactory solution cannot be achieved, please call B.E.A., Inc. for further assistance during Eastern Standard Time at **1-800-523-2462 from 7am - 5pm or 1-800-407-4545 from 5pm - midnight & weekends.**

DO NOT leave any problem unresolved. If you must wait for the following workday to call B.E.A., leave the door inoperable until satisfactory repairs can be made. **NEVER** sacrifice the safe operation of the automatic door or gate for an incomplete solution.