



PBS1

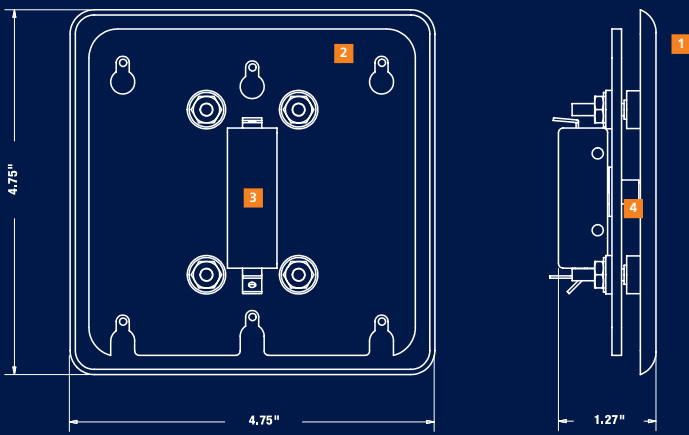
This standard 4 3/4" square push plate is the premium design for wall applications as it is functional, aesthetically appealing and weather resistant.

A Plate Revolution, Now!

PBS Series

Stainless Steel BEA 4 3/4" Square Style Push Plates

- Greater surface area of the push plate makes this push plate easy to see
- Perfect for bollard and wall mount applications
- Beveled edges provide a tamper and vandal proof solution to your push plate needs, allowing no room to get objects between plate and box
- An all-active plate activates with any "push" location
- Stainless steel finish will not deteriorate/rust where it is touched and is scratch and scuff resistant
- Text and logo are baked onto the surface for leading durability
- Screws come in multiple sizes (#6 & #8), which fit both single and 4X4 gang mounting boxes
- Push plates come in multiple colors and sizes that allow you to easily meet specifications and customer requests
- Weather boot between plate and back plate for all weather applications
- Lifetime warranty allows you to save money in the long run



Components

- 1 Front Plate
- 2 Back Plate
- 3 Cherry Switch
- 4 Weatherboot

Technical Specifications/ Mounting Hardware

- a. 16 gauge, 304 2B Stainless Steel Faceplate
- b. 1/8" thick, Aluminum Backplate
- c. Stainless Steel 6-32 x 1" and 8-32 x 1" Allen head mounting screws
- d. Cherry Switch: Single-pole, 15A, COM/ NO/ NC contacts
- e. 5/64" Allen key removes both 6-32 and 8-32 mounting screws
- f. Powdercoat then clear coated faceplates available on certain styles
- g. Wire nuts

Custom Specifications

BEA proposes a variety of custom solutions for your push plates:

Abrasive Etching/Engraved – This method creates a very accurate and deep "scratch" in the plate that is then filled with paint to create the custom logo/text on the surface of the plate.

Pad Printed – Logo/text is stamped onto the surface of the steel plate using a special pad. The logo is only printed on the surface of the plate.

Embossing – This process requires the use of a special tool designed to punch the back of the face plate with the custom information. A special coating is added to create a dramatic 3D embossing for your push plate.

Contact Information

BEA Inc.
 RIDC Park West
 100 ENTERPRISE DRIVE
 PITTSBURGH, PA 15275

PHONE 1-412-249-4100
 FAX 1-888-523-2462
 TOLL FREE 1-800-5 BEA INC

BEA West
 190 East
 Arrow Highway Suite A
 San Dimas, CA 91773-3314
 FAX 1-888-523-2462
 TOLL FREE 1-877-232-9378

www.beasensors.com

PBS Series



10PBS1 - Text and Logo



10PBS - Text only



10PBS10 - Plain

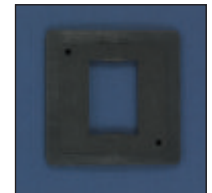


10PBSLL - Logo only



10PBS1B - Text and Logo blue

Mounting Components



10WRSQ475
 Weather Ring



10BOX475SQFM

Square Flush Mount Box



10BOX475SQSM

Round Surface Mount Box



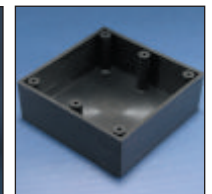
10BOLLARD



10BRINGC
 Beauty Ring



10PBBRACKET
 Surface Mounting Kit



10BOXDG4H
 Double Gang
 Mount Box



10BOXDG45C-
 Double Gang Mount